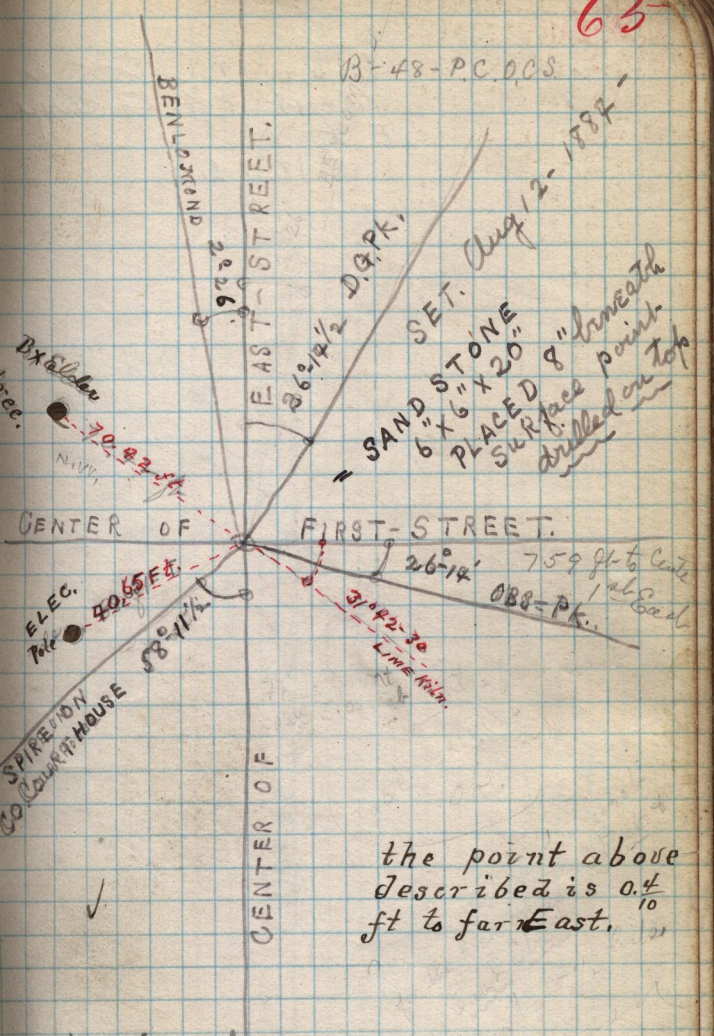


B-48-P.C.O.C.S.



Aug 12 - 1887

SANDSTONE
6" X 6" X 20"
PLACED SURFACE
8" beneath
point
drilled on top

759 ft to Center
1st East
OBS-P.K.

31° 42' 30"
LIME KILN

the point above
described is 0.4
ft to far East. ¹⁰

R. P. Van Dyke
assisted in placing it.
cost. 50¢